

Wisconsin's eHealth Initiative

Kevin R. Hayden, Secretary
Department of Health and Family
Services

Digital Healthcare Conference
May 10, 2007

Today's Discussion

- National drivers for eHealth
- State environment
- Questions the state is pondering
- Conversation about the future

Health Information Technology

- Improved quality
- Reduced errors
- Lowered costs
- Transforms care
- Improves and sustains individual and population health

3

National Drivers

- Progress in our state
 - Medicare payments tied to performance
 - Presidential priority continues with Four Cornerstones: brings purchasers and employers into discussion
 - Certification and development of standards for interoperability being implemented
 - Seed capital available via demonstration, transformation, etc.

4

State Environment

- Public / private sector poised for collaboration on widespread adoption of HIT/HIE
- Gubernatorial priority continues from Executive Order through Biennial Budget eHealth provisions

5

State Environment

- WI HIT inventory preliminary findings
- Responses to IOM Reports
 - WCHQ
 - eHealth Care Quality and Patient Safety Board
 - WHIO
- Transforming Medicaid
- Regional Health Information Organizations

6

State Environment: Transforming Medicaid

- Advance regional health information exchange
- Bring benefits of electronic medical records to Medicaid population
- Reform reimbursement system
- Improve health care delivery system
- Engage consumers in managing own health care

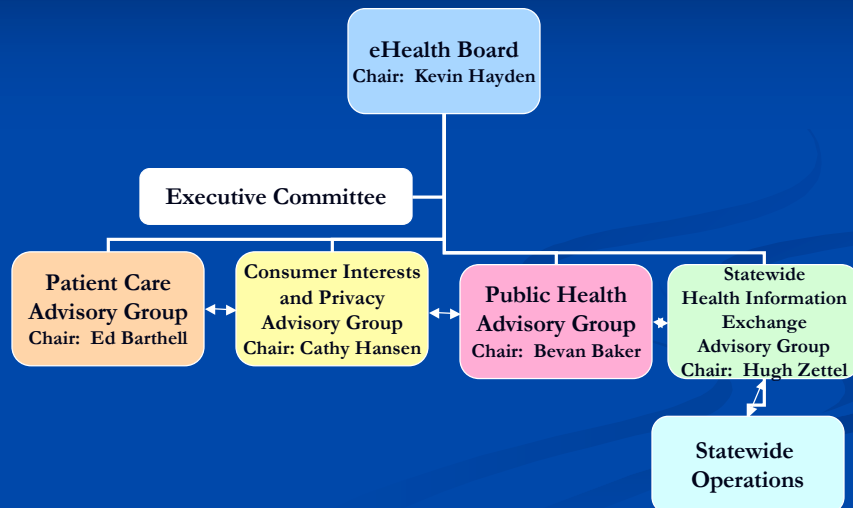
7

State Environment: Privacy Concerns

- Goal: exchange health information electronically in a secure way that protects patient's privacy
- Solutions:
 - Patient verification
 - Modify Wis. Stats. 146 to mirror HIPAA
 - Modify Wis. Stats. 51.30 for treatment purposes
 - Changes to HIPAA

8

Wisconsin eHealth Governance



9

Questions the State is Pondering

- **Community Environment**
 - Create networks
- **Organizational Environment**
 - Leaders driving adoption
 - Organizational change
- **Consumer Environment**
 - Raising expectations around technology use
 - Increased management of own health

10

Conversation About the Future

- How we align incentives to get most value?
- Public policies needed around information sharing?
- How can virtual registries help provide better chronic disease management, improve public health surveillance?
- Are HIEs sustainable without government funds?
- How do we engage consumers/patients in IT adoption and HIE?
- What is the desired level of patient access and control?

11

For more information on the WI eHealth Initiative

Go to:

<http://ehealthboard.dhfs.wisconsin.gov/>

DHFS Contacts:

- Kathy Farnsworth, eHealth Chief of Staff
farnsK@dhfs.state.wi.us or (608) 267-2082
- Denise Webb, Policy Initiatives Advisor - Health Care IT
webbdb@dhfs.state.wi.us or (608) 267-6767

12